

217 SERIES RADIAL LEAD INDUCTORS

Features

- Designed for use in EMI filters and telephones
- Inductance Range from 0.1 μ H to 1.5mH
- Materials meet UL94V-0
- Operating Temp. -40°C to +130°C (see note below)
- Custom Inductance Values Available

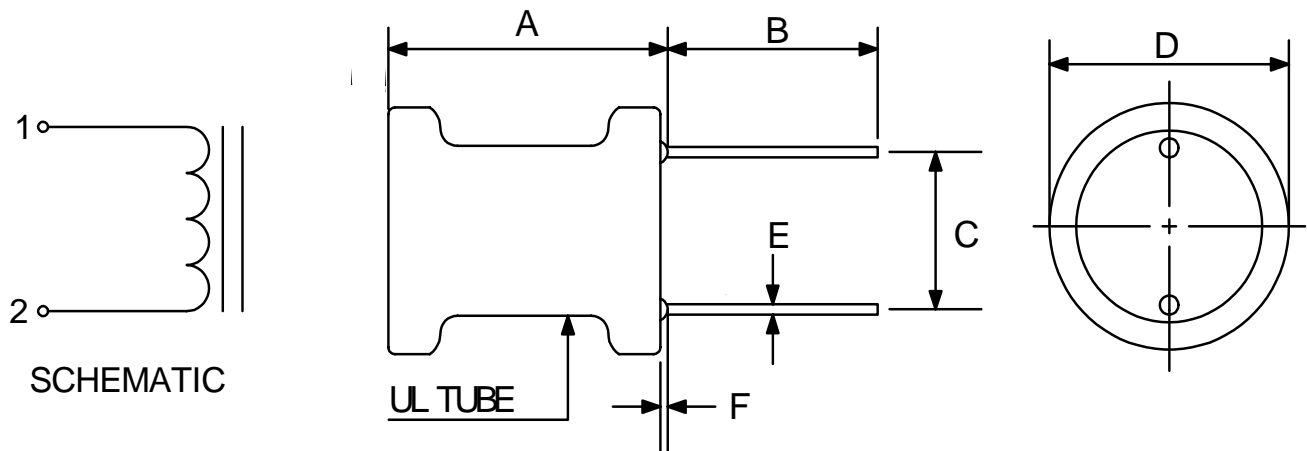
ELECTRICAL SPECIFICATIONS AT 25°C

Part Number	Inductance (uH)	Q Typ	Test Frequency (MHz)	SRF Typ (MHz)	DCR Ohms (Max)	Rated DC Current (A) (Max)	Package Schematic
PT21701	1.0 \pm 20%	30	7.960	100	0.006	5.00	A
PT21702	1.5 \pm 20%	"	"	78	0.006	4.30	"
PT21703	2.2 \pm 20%	"	"	63	0.010	3.90	"
PT21704	3.3 \pm 20%	"	"	50	0.018	2.90	"
PT21705	4.7 \pm 20%	"	"	41	0.022	2.60	"
PT21706	6.8 \pm 20%	30	7.960	33	0.028	2.30	A
PT21707	10 \pm 10%	70	2.520	27	0.043	1.90	"
PT21708	15 \pm 10%	60	"	21	0.056	1.60	"
PT21710	22 \pm 10%	60	"	17	0.086	1.30	"
PT21711	33 \pm 10%	55	2.520	13	0.140	1.00	A
PT21712	47 \pm 10%	45	"	11	0.170	0.94	"
PT21713	68 \pm 10%	45	"	9.0	0.260	0.73	"
PT21714	100 \pm 10%	35	0.796	7.2	0.330	0.67	"
PT21715	150 \pm 10%	50	"	5.7	0.560	0.52	"
PT21716	220 \pm 10%	35	0.796	4.5	0.720	0.46	A
PT21717	330 \pm 10%	36	"	3.6	1.100	0.37	"
PT21718	470 \pm 10%	55	"	2.9	1.700	0.30	"
PT21719	680 \pm 10%	40	"	2.3	2.300	0.26	"
PT21720	1000 \pm 10%	140	0.252	1.9	4.300	0.19	"
PT21731	3.3 \pm 10%	25	7.960	54	0.013	3.40	B
PT21732	4.7 \pm 10%	25	"	50	0.017	3.00	"
PT21733	8.8 \pm 10%	25	"	38	0.022	2.60	"
PT21734	10 \pm 10%	60	2.520	30	0.031	2.20	"
PT21735	15 \pm 10%	45	"	24	0.042	1.90	"
PT21736	22 \pm 10%	60	2.520	17	0.070	1.50	B
PT21737	33 \pm 10%	45	"	15	0.082	1.20	"
PT21738	47 \pm 10%	40	"	13	0.130	1.00	"
PT21739	68 \pm 10%	35	"	10	0.160	0.97	"
PT21740	100 \pm 10%	30	0.796	8.2	0.230	0.81	"
PT21741	150 \pm 10%	35	0.796	6.6	0.400	0.61	B
PT21742	220 \pm 10%	25	"	5.3	0.430	0.52	"
PT21743	330 \pm 10%	30	"	4.2	0.750	0.44	"
PT21744	470 \pm 10%	20	"	3.4	1.000	0.39	"
PT21745	680 \pm 10%	20	"	2.5	1.500	0.32	"
PT21746	1000 \pm 10%	50	0.252	2.3	2.200	0.26	"
PT21747	1500 \pm 10%	90	"	1.8	3.500	0.21	"
PT21761	1.0 \pm 10%	20	0.796	150	0.004	8.40	C
PT21762	1.5 \pm 10%	20	"	110	0.006	5.60	"
PT21763	2.2 \pm 10%	20	"	68	0.006	5.00	"
PT21764	3.3 \pm 10%	20	"	59	0.006	4.50	"
PT21765	4.7 \pm 10%	20	"	45	0.009	4.00	"
PT21766	6.8 \pm 10%	20	0.796	34	0.012	3.50	C
PT21767	10 \pm 10%	75	2.52	26	0.015	3.20	"
PT21768	15 \pm 10%	70	"	19	0.019	2.80	"
PT21769	22 \pm 10%	65	"	14	0.026	2.40	"

Note:

1. Full rated current is based on an ambient operating temperature of 85°C with a 45°C maximum temperature rise in free air, all materials are rated at 155°C or higher.
2. For non-RoHS parts consult factory for special part numbers.

MECHANICAL OUTLINES



Dimensions	A Max	B	C	D Max	E Max	F Ref
Package A	$\frac{10.0\text{mm}}{0.393''}$	$\frac{12.0-15.0\text{mm}}{0.472-0.590''}$	$\frac{5.0\pm 0.5\text{mm}}{0.196\pm 0.020''}$	$\frac{8.0\text{mm}}{0.314''}$	$\frac{0.70\text{mm}}{0.027''}$	$\frac{1.5\text{mm}}{0.059''}$
Package B	$\frac{10.5\text{mm}}{0.413''}$	$\frac{15.0-20.0\text{mm}}{0.590-0.787''}$	$\frac{5.0\pm 0.5\text{mm}}{0.196\pm 0.020''}$	$\frac{9.5\text{mm}}{0.374''}$	$\frac{0.70\text{mm}}{0.027''}$	$\frac{1.5\text{mm}}{0.059''}$
Package C	$\frac{13.0\text{mm}}{0.511''}$	$\frac{15.0-20.0\text{mm}}{0.590-0.787''}$	$\frac{5.0\pm 0.5\text{mm}}{0.196\pm 0.020''}$	$\frac{10.5\text{mm}}{0.413''}$	$\frac{0.70\text{mm}}{0.027''}$	$\frac{1.5\text{mm}}{0.059''}$